



TOOELE COUNTY  
**HEALTH**  
DEPARTMENT

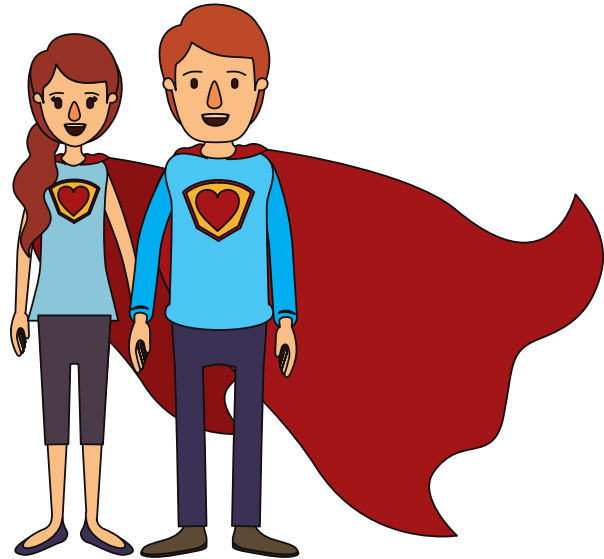
**2020**

**Wow!**

**Annual Report**  
**What a year!**

# Public Health Super Heros!

**"I think a hero is an ordinary individual who finds strength to persevere and endure in spite of overwhelming obstacles." -Superman**



# TABLE OF CONTENTS:

Director's Message	4
Mission, Vision, Core Values	6
Board of Health	7
Organizational Chart	8
Strategic Plan	9
Community Health Assessment	10
Community Health Improvement Plan	11
Snapshot	14
Budget Revenue & Expenditures	16
By the Numbers	18
Highlights	21
Communicable Disease Data	40





# A MESSAGE FROM OUR DIRECTOR:

This year has been unlike any other in public health since the Spanish Influenza of 1918. The effects of the COVID-19 pandemic have touched every person's lives in our community, some in much more profound ways than others. The pandemic affected how we work, go to school, worship, associate with friends and family, nearly every aspect of our lives. Through all of this, the Tooele County Health Department responded in an effort to minimize the impact and devastation of this event. This annual report for 2020 highlights the many activities and efforts made by the Health and Aging Department staff to weather this trying year.

The data and stories presented in this report illustrate the far-reaching impacts of the programs and services we provide. We recognize that we cannot do this work without our wonderful staff, our community partners, and the Tooele County Board of Health. I am grateful for the leadership and support of our Board of Health, our County Commissioners, and the municipal leaders in our community.

In June of 2020, Tooele County Health Department was reaccredited by the Public Health Accreditation Board. This national accreditation shows the department's commitment to quality improvement, performance management, accountability, transparency, and the capacity to deliver the Ten Essential Public Health Services.

Tooele County Health Department continues implementing our Community Health Improvement Plan to promote healthy living and reducing obesity, improving mental health and preventing suicide, and reducing substance abuse. Working in tandem with our community partners, we are putting in the groundwork to make changes that can bring about long-lasting improved health in our community and our residents' lives.

Every division in the Health Department altered their activities and objectives in response to the COVID-19 pandemic. This report highlights some of the activities and measures taken by our divisions to address the response. A few of those highlights include conducting disease investigation and contact tracing, delivering meals to the homebound, providing meals for seniors and the underserved of our community, working with businesses to provide a safe environment for their customers and employees, and providing the lifesaving vaccine that will help end the pandemic.

Everything we do is focused on health and safety, and everything we do requires partners. In Tooele County, we are unusually fortunate that our community so strongly supports this work. It is this support and our partnerships that allow us to succeed and make our work so truly rewarding. Our staff and I sincerely thank you and look forward to continued partnerships and even more progress towards ending the pandemic and a healthier and safer future.



**Jeff Coombs**  
**Executive Director/Health Officer**



## **OUR MISSION:**

The Tooele County Health Department serves as a leader in public health and aging services for our diverse community, by promoting health and safety, striving to prevent avoidable disease, assessing the health of our community, developing policies, providing services and education, and protecting the environment to assure quality of life.

## **OUR VISION:**

A healthy and safe community for all Tooele County residents.

## **OUR CORE VALUES:**

1. **Collaboration:** We work together internally and externally for the mutual benefit of the community through the sharing of information, resources, and ideas to achieve a common goal.
2. **Excellence:** We strive to provide the highest quality services through individual efforts, evidence-based practices and a culture of quality improvement.
3. **Innovation:** We apply the most advanced technology, information and research to become a revolutionary leader in public health.
4. **Integrity:** We act with a consistency of character and take individual ownership and accountability for our actions.
5. **Diversity and Inclusion:** We treat all individuals with respect, dignity, acceptance, and compassion.
6. **Service:** We provide quality service to all individuals both internal and external.

# 2020 BOARD OF HEALTH:



**Anthony Howes**



**Mayor Brent Marshall**  
**Chairperson**



**Mayor Brian Johnson**  
**Vice Chair**



**Devan Clevenger**



**Kyle Memmott**



**Linda McBeth**



**Mike Wells, DDS**

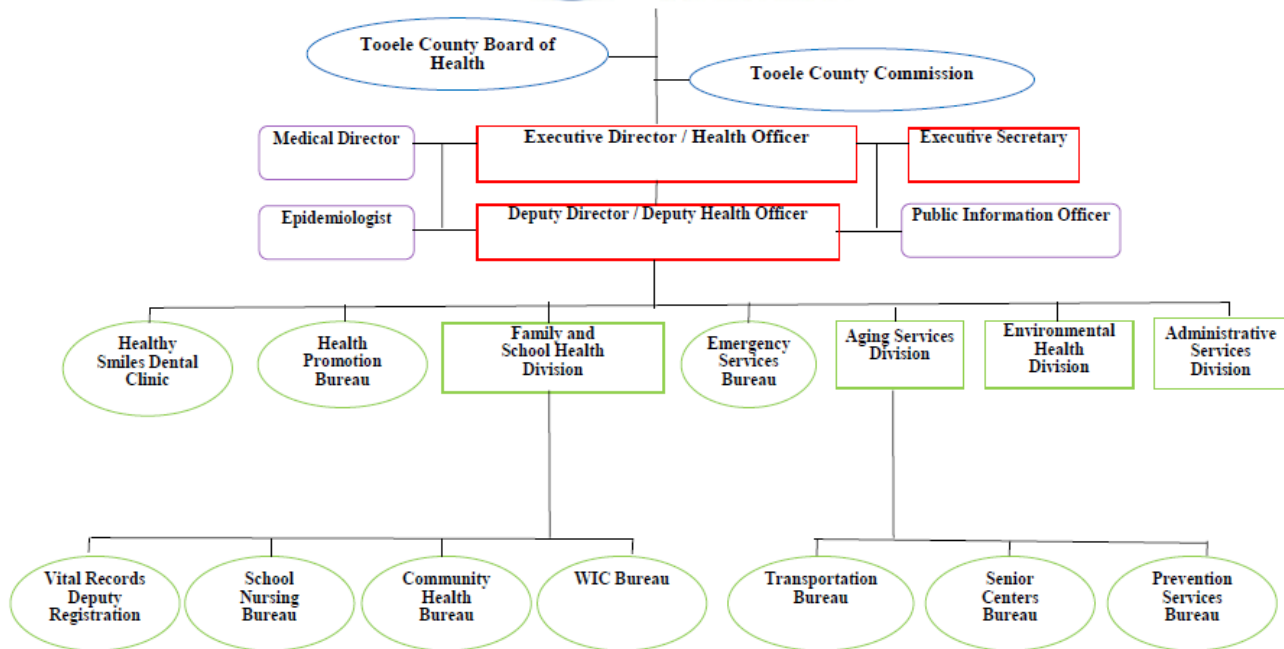


**Pamela Bennett**



**Commissioner**  
**Tom Tripp**

# ORGANIZATIONAL CHART:





# OUR STRATEGIC PLAN:

**GOAL:** Tooele County Health Department (TCHD) will be recognized by the community as the primary source of public health information.

**GOAL:** TCHD will provide high quality health information to stakeholders and the community to promote well-informed decisions.

**GOAL:** To ensure that the TCHD provides sufficient resources to accomplish the Community Health Improvement Plan (CHIP) goals.

**GOAL:** Evaluate the CHIP progress annually and update the CHIP as appropriate.

**GOAL:** Ensure the TCHD workforce is adequately oriented, trained and provided with ample opportunity and resources for professional development in order to achieve excellence in service to all.

**GOAL:** All TCHD employees feel informed and empowered to make decisions and perform in their capacity.



# COMMUNITY HEALTH ASSESSMENT:

The Community Health Assessment helps local public health system members identify the most pressing health issues in Tooele County. Through analysis and interpretation of data collected from a variety of sources, public health leaders in Tooele County were able to make informed decisions and develop appropriate interventions to affect change, resulting in a healthier community for all Tooele County residents.



# COMMUNITY HEALTH IMPROVEMENT PLAN:

The Tooele County Health Department is committed to making measurable improvements in the health and safety of our community. As part of an ongoing community health improvement process, community partners from various organizations worked together to develop Tooele County's Community Health Improvement Plan (CHIP). Health priorities selected by community partners for the CHIP are based on data presented in the Community Health Assessment. Despite the improvements made and efforts expended in promoting health and wellness, too many of our citizens are overweight or obese, abuse substances, and suicide rates continue to increase. The challenges we face require a call to action. The CHIP provides the framework for mobilizing community action through partnerships to improve the health of all Tooele County residents, particularly our most vulnerable citizens. Three data-driven health priorities have been identified and are being addressed. Our community must share the ownership of these complex public health problems and we will need diverse community engagement to show improvement. Improved community-wide alignment of our efforts and resources across all areas will be essential to meeting the goals established for each health priority. By working together, we can improve the health of the citizens we serve and achieve our vision of a healthy and safe community for all Tooele County residents.

# **CHIP HEALTH PRIORITY AREAS:**

- 1. Promoting Healthy Living**
- 2. Improving Mental Health & Preventing Suicide**
- 3. Reducing Substance Abuse**



# **CHIP GOALS:**

## **Promoting Healthy Living and Reducing Obesity**

**Goal 1: Increase the daily consumption of nutritious foods.**

**Goal 2: Increase the level of daily physical activity among residents.**

**Goal 3: Increase the percentage of the population at a healthy weight.**

## **Improving Mental Health and Preventing Suicide**

**Goal 1: Increase social norms supportive of help-seeking and recovery.**

**Goal 2: Increase prevention and early intervention for mental health, suicidal ideations, and substance misuse and abuse.**

**Goal 3: Increase support for survivors of suicide loss.**

## **Reducing Substance Abuse**

**Goal 1: Increase awareness and decrease availability of all abusive substances.**

**Goal 2: Increase substance abuse treatment referrals and prevention programs.**

# **2020 SNAPSHOT:**

**POPULATION - 72,259**

**AVERAGE HOUSEHOLD INCOME - \$74,562**

**LIFE EXPECTANCY - 78.3 YEARS**

**PERSONS LIVING IN POVERTY - 5.3%**

**NO HEALTH INSURANCE - 9.7%**

**HIGHER EDUCATION - 24.2%**

**TRAVEL TIME TO WORK - 28.8 minutes**

**COUNTY HEALTH RANKING - 14 of 28**



# LEADING CAUSES OF DEATH

The information below represents the age-adjusted death rate for the most common causes of death in Tooele County.

**\*age-adjusted death rate per 100,000**

<b>Cause of Death*</b>	<b>Tooele*</b>
<b>Diseases of the Heart</b>	<b>206.79</b>
<b>Cancer</b>	<b>127.86</b>
<b>Alzheimer's Disease</b>	<b>66.01</b>
<b>Unintentional Injuries</b>	<b>50.75</b>
<b>Chronic Lower Respiratory Disease</b>	<b>49.33</b>
<b>Diabetes</b>	<b>43.86</b>
<b>Cerebrovascular Diseases</b>	<b>30.95</b>
<b>Suicide</b>	<b>20.58</b>
<b>Diseases of the Kidney</b>	<b>18.93</b>
<b>Influenza and Pneumonia</b>	<b>12.13</b>

# BUDGET REVENUE & EXPENDITURES:

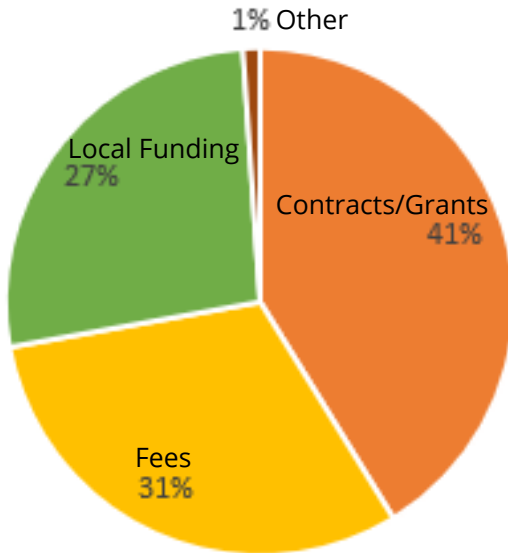


			%
<b>REVENUE</b>			
Contracts/Grants	\$2,121,165		41%
Fees	1,569,542		31%
Local Funding	1,358,154		27%
Other	55,212		1%
	\$5,104,073		
<b>EXPENSES</b>			
Family/School Health	\$1,382,746		29%
WIC	1,071,395		25%
Admin/Support	489,452		12%
Environmental Health	449,908		11%
Dental Health	439,700		10%
Health Promotion	261,677		6%
Emergency Prep	140,156		3%
	\$4,235,034		
<b>NET</b>	\$869,039		
<b>COVID RESPONSE</b>	\$1,154,628		

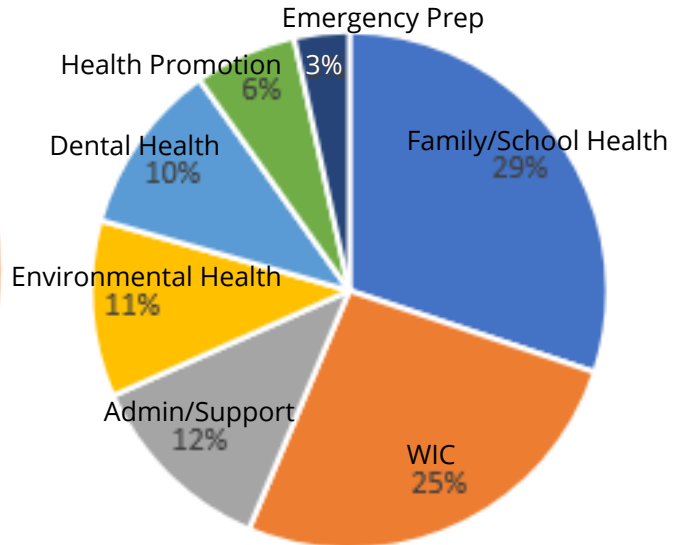


# BUDGET REVENUE & EXPENDITURES :

Revenue



Expenses



# BY THE NUMBERS:

## Administrative Services Division

Birth Certificates 1705  
Death Certificates 432  
Additional Copies of Birth 255  
Additional Copies of Death 1699  
Multiple Pages 154  
Reissues 139



## Aging Services Division

Congregate Meals (Before COVID-19) 3942  
Drive-thru Pick Up and Home Delivered Meals 74511  
Medicare Contacts 1115  
Group Outreach Contacts  
Client Assistance Savings \$91,612.79  
Drive-thru Senior Bags  
1024 Bags, 4 Meals Per Bag, 4096 Meals  
Home-delivered Senior Bags  
1610 Bags, 4 Meals Per Bag, 6440 Meals  
Grand Total of Meals for All Senior Bags 10536

## Environmental Health Division

Food Establishment COVID-related Complaints/Inspections 149  
COVID Event Plans Reviewed 66  
Food Establishment Plan Reviews 25  
Food Establishment Permits 242  
Food Establishment Inspections 298  
Food Truck Inspections 85  
Food Truck Permits 115  
Temporary Event Inspections 18  
Food Safety Managers Certified 57  
Food Handlers Permits Issued 1794  
Foodborne Illness Complaints 10  
School and Playground Inspections 29  
Daycare Food Service Inspections 14  
Public Pools and Spas Inspections 30  
Public Pool Water Samples 138  
Body Art Establishment Plan Reviews 3  
Body Art establishment Permits and Inspections 20  
Body Art Establishments Permitted 58  
Meth Houses Decontaminated 20  
Radon Kits Sold 70  
Septic System Permits Issued 60  
Well Permits Issued 21

# BY THE NUMBERS:

## Health Promotion Bureau

Car Seats Checked 17  
Car Seats Distributed 18  
NARCAN Doses Distributed 200  
Suicide Prevention Trainings 35  
Suicide Prevention Trained 558  
Tobacco Handlers Trained/Permitted 58  
Tobacco Compliance Checks 42  
Illegal Sales to Minors 3  
Quit Line Registrations 117

## Prevention Services Bureau

Community Prevention Event Attendees 1750  
Grant Funding Acquired \$124,000  
Wendover Opioid Summit Training Attendees 26  
Suicide Prevention Classes 15  
Alcohol Retailer Compliance Checks 16  
Man Therapy Campaign  
54 Sessions (an increase of 25.6%)  
449 Page Views (an increase of 197.4%)  
10 Completed Head Inspections (an increase of 150%)

## Healthy Smiles Dental Clinic

Dentures 178  
New Patients 437  
Patient Visits 2183

## Family and School Health Division

### Community Health Bureau

Cancer Screenings 31  
Immunizations 9302  
Home Visits  
228 Initial/226 Follow-up  
STD/HIV Testing 60  
TB Testing 276

### WIC Bureau

Clients Served 1061  
Education Classes 61  
Initially Breastfed 1003

### School Nursing Bureau

Flu Clinics 30  
Flu Vaccines Given 2219  
School Nurses 5  
Vision Screenings 1627  
VSQ Screenings 414



**“No matter how bad  
things get, something  
good is out there,  
over the horizon.”  
– Green Lantern**



# ADMINISTRATIVE HIGHLIGHTS:

In June of 2020, Tooele County Health Department was notified of being awarded national reaccreditation through the Public Health Accreditation Board. PHAB is a nonprofit organization that administers the national accreditation program, which aims to improve and protect the health of the public by advancing and transforming the quality and performance of governmental public health agencies. Reaccreditation is a great accomplishment for all of our wonderful staff. Strong public health departments engaged in effective community partnerships make communities healthier places to live, work, learn, and play.

The Utah State Senate and House members honored public health workers from The Tooele County Health Department. A concurrent resolution recognizing COVID-19 relief efforts was passed in their honor. The resolution recognized and thanked individuals from health departments throughout the state who provide accurate data to the legislature, the governor, and the public on COVID-19.

Representative Paul Ray said that health departments throughout the state have done a fantastic job of navigating COVID-19 issues and keeping individuals living in the state safe. "We got into a pandemic that we have not seen since 1918 and we turn to these health departments and they have no manual and we put a huge burden on their shoulders," Ray said. "We have never given them a lot of money. They came in underfunded and they have done a fantastic job considering the circumstances that we are in."

The Tooele County Board of Health also recognized public health and showed their appreciation to all employees for their service to the residents of Tooele County during the COVID-19 Pandemic Response.

# AGING SERVICES DIVISION

## HIGHLIGHTS:

In response to the COVID-19 pandemic, Aging Services staff focused efforts on the essential needs of our clients and adapting methods of service delivery to ensure safety. The unique conditions inspired creative solutions, such as “Senior Bags” and “drive-thru” events.

Shortages in necessities and the recommendations to stay home, to stay safe (especially older adults and those with compromised health) facilitated the “Senior Bag” initiative. Beginning the first week of April thru December 2020, food and personal care items were gathered, sorted, assembled into individual bags, and distributed to “high-risk” older adults throughout our community. Bag contents vary but typically included some nonperishable food (canned & boxed), a few pieces of fresh produce, and a personal hygiene product (like toilet paper or sanitizer). One week each month the Senior Bags were delivered to homebound and frail clients. Another week each month Senior Bags were handed out at our senior center drive-thru meal service. A total of 10,536 meals were distributed to high-risk households in our county (that is 2,634 Senior Bags containing at least 4 meals per bag, plus personal care items). This project also provided our Aging Services staff opportunities to meet and work with other community entities. In addition to county staff, more than 50 volunteers donated approximately 275 hours of service to this cause. It also gave us an opportunity to educate those less familiar or unfamiliar with our organization about the essential community services we provide to older adults on a regular basis throughout Tooele County.

# AGING SERVICES DIVISION

## HIGHLIGHTS:

Two “drive-thru” events for caregivers were organized by Tooele County Aging Services staff. Collaboration with local organizations enabled us to provide important information and valuable resources to this population.

Tooele County Health Department provided us with Tooele County Cares kits containing COVID-19 preventative items, like reusable masks and educational materials. A quick, masked ‘hello’ and a care package were given through open car windows as vehicles pulled through the Tooele Senior Center parking lot one afternoon. Three of our support groups (Alzh Association Caregiver Support, Parkinson's, and Next Chapter) and our caregiver education attendees were invited to participate.

On November 13th, we celebrated National Family Caregiver Month. The “drive-thru” event, A Celebration of Heroes at Home, was hosted by All-Star Bowling & Entertainment in their parking lot. Tooele County Aging Services also partnered with Tooele City Library, Our Healthy Circle at Mountain West Medical Center, and the Tooele County Health Department to recognize and support those in our community caring for a loved one. Attendees stayed in their vehicles on a designated route, stopping briefly at 4 different booths. Each station provided these unsung heroes with an information/resource page and a gift to help ease their caregiving responsibilities.

# AGING SERVICES DIVISION

## TRANSPORTATION

### BUREAU HIGHLIGHTS:

In the 2020 pandemic virus that has gripped the planet, we were forced out of our comfort zone and forced to step up our game plan as we watched our numbers free-fall. We needed to come together as a community and figure out where we were required the most.

At times of emergency, we all realize just how vital the transportation system is. People still need to go to the grocery store, doctor appointments, pharmacy, and work. Being the leading mobility service for Tooele County, our response to COVID-19 has shown us that with the right blend of mobility options and public-private partnerships, people can still travel safely to where they need to go. We were lucky to be part of the team working on the “High-Risk-Project”. Our part in the project was high-risk grocery delivery and telehealth. From July 2020 through December 2020, we did (78) grocery deliveries and (25) telehealth drop-offs.

Not just during pandemics can we think creatively about maximizing all our services; we can do this all the time. We can't let these lessons go to waste. In the wake of the coronavirus outbreak, we've learned: 1) transportation ecosystems aren't either “publicly or privately” owned. 2) Transportation systems must adapt quickly. 3) Agile mobility is critical when emergencies strike.



# AGING SERVICES DIVISION

## TRANSPORTATION

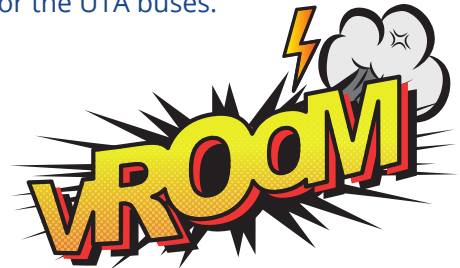
### BUREAU HIGHLIGHTS:

Salt Lake Medical: Is operated with all-volunteer drivers and serves seniors 65+, individuals with disabilities, and veterans.

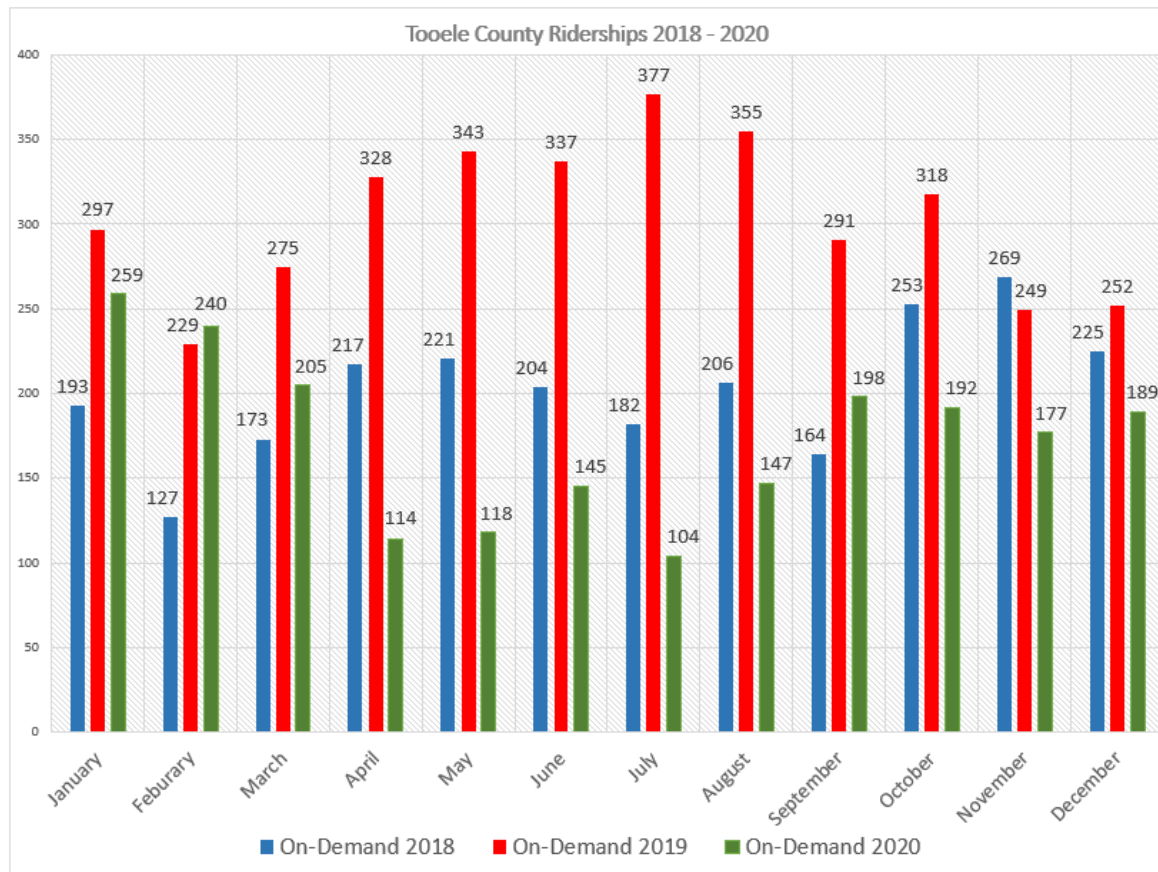
Senior Transportation: Is transit services for seniors 60+ shopping, medical, recreation, etc.

On-Demand Service: The On-Demand Service provides services consisting of point-to-point demand response from city to city. Services are available to the public. The On-Demand is a feeder service for the rural areas to have transportation to Tooele City. The fare for the On-Demand is interchangeable with the UTA buses. (Riders are given a transfer after paying a fare to the On-Demand. The transfer is good for up to two hours for the UTA buses.

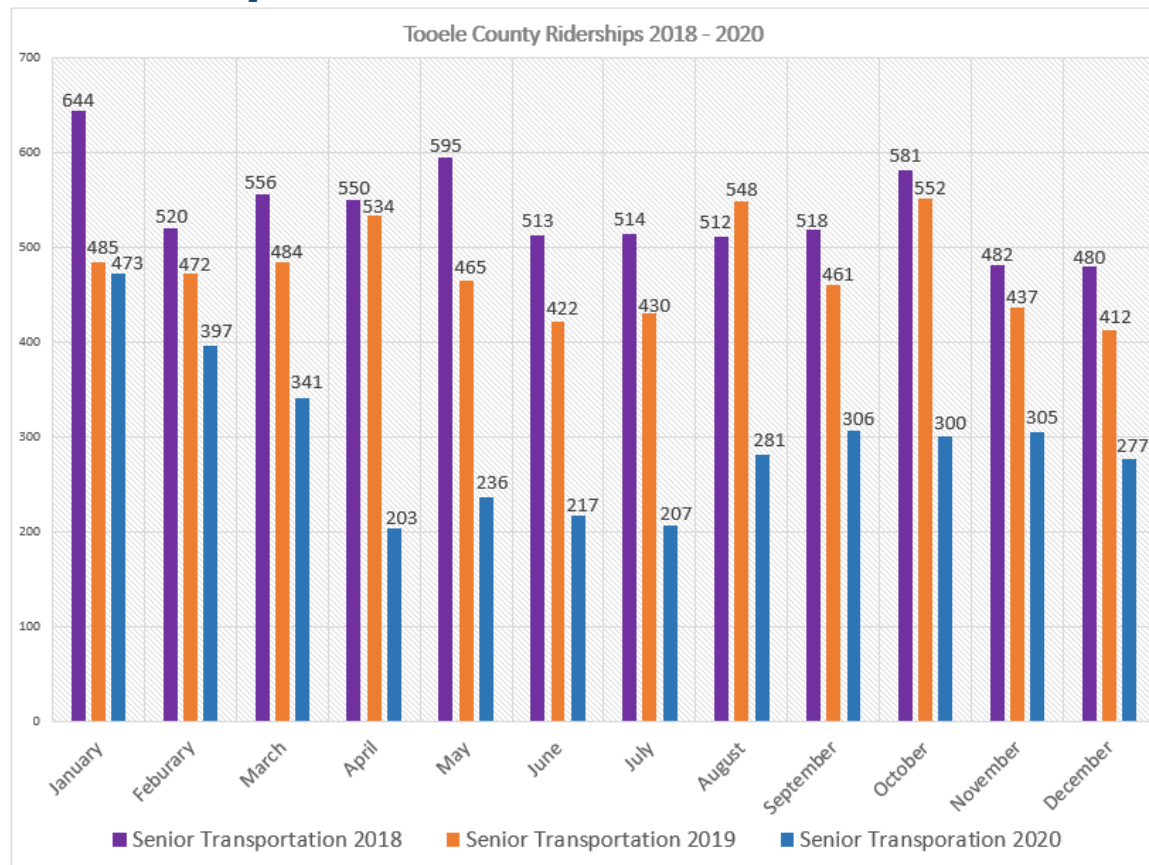
WIC/Healthy Smiles: Provides transportation for Low-Income, Seniors, Individual(s) with disabilities



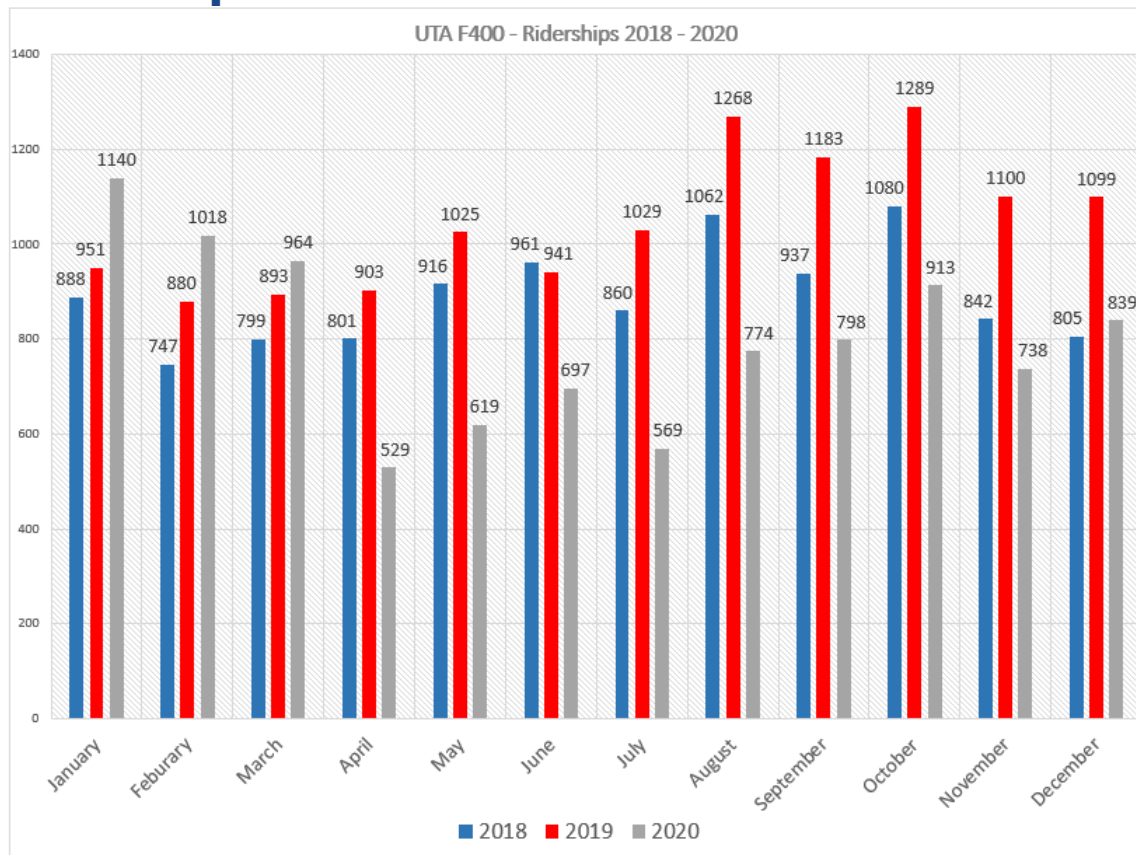
# Local Ridership:



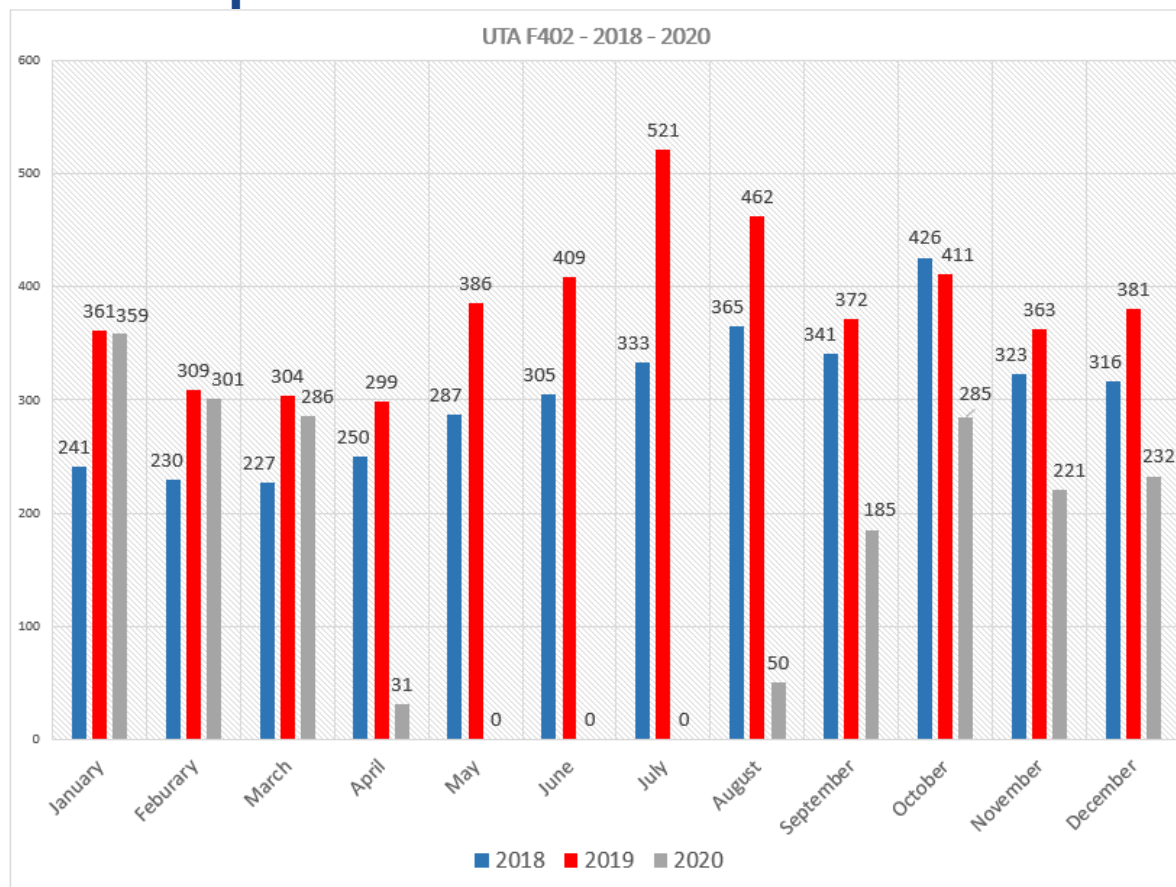
# Local Ridership:



# UTA Ridership:



# UTA Ridership:



# EMERGENCY SERVICES

## BUREAU HIGHLIGHTS:

The Tooele County Health Department Emergency Services Bureau spent most of 2020 in COVID-19 response work. Providing everything from testing to personal protective equipment to our community. We also responded to an earthquake and to a contaminated water system during 2020. We continue to work with our local and regional community partners to mitigate and alleviate the impact of disasters in Tooele County. We do this by providing an open forum promoting cooperation, communication, coordination, and collaboration; and planning for the effective delivery of public health-related emergency services to any of our communities that may be affected by disaster.

These stakeholders include surrounding cities and municipalities, county agencies, the Tooele County School District, local Volunteer Organizations Active in Disasters (VOAD), the Tooele Public and Private Partnership (TP3), Mountain West Medical Center, and local EMS, Fire, and Law Enforcement agencies.

TCHD actively works with the Tooele County Emergency Management (TCM) Department and their associated emergency management partners like Tooele Responds as well. We also work closely with the other 13 Local Health Departments (LHDs) throughout the state of Utah and the Utah Department of Health (UDOH) for combined planning and health efforts to keep the public safe.

# ENVIRONMENTAL HEALTH

## DIVISION HIGHLIGHTS:

Environmental Health provided assistance to the COVID-19 response as needed and many things were put on hold this year due to COVID-19. Household Waste Collection Day was canceled and one of many programs to be interrupted by COVID-19. We did however continue to permit food service establishments, provide food service plan reviews, and do food service/food truck/temporary event (although there were few) inspections. We continued to train food handlers, certify food safety managers, and investigate foodborne illness complaints. We continued to inspect schools, playgrounds, daycares, public pools and spas, certain businesses, and take water samples when needed. We provided septic system permitting, inspecting, and locating, as well as provided well permitting, and water sampling for private wells. We continued to issue decontamination permits for houses contaminated with meth, and we educate the public on Radon and air quality.

It is important for TCHD to work to keep our physical environment healthy and safe. We do this by continually facilitating proper disposal of hazardous materials, monitoring air and water quality, inspecting food service establishments, and educating the community on the importance of keeping our homes free from dangerous chemicals.



# FAMILY AND SCHOOL HEALTH DIVISION HIGHLIGHTS:

The Community Health Bureau has always strived to promote health in our community by assessing our community's needs, providing services to prevent avoidable disease, diagnose and investigate health problems, provide education, and collaborate with community partners and agencies.

In 2020, we were mobilized to address the COVID-19 pandemic. Our staff performed contact tracing and investigations. We educated staff and community members regarding the disease, transmission, and encouraged preventative measures. These measures were accomplished while continuing to address our normal epidemiological investigations for sexually transmitted diseases (STD), infectious diseases, foodborne illness, and tuberculosis (TB). Child and adult immunization clinics are offered daily along with TB testing and STD/HIV testing.

The Community Health Bureau has a long-standing collaboration with the schools and businesses in the community to provide influenza vaccines. Breast and cervical cancer screenings are available for low-income women over the age of 40. Family planning services such as pregnancy testing and Depo Provera injections for low-income women are offered. Targeted case management services are provided to help families gain access to needed medical, social, education, and other services.

Since 1998, programming for Sexual Risk Avoidance Education (SRAE) has been provided to the Tooele County School District junior high school students to encourage and promote healthy and safe lifestyle choices. The Community Health Bureau found innovative ways to safely provide these services to allow for advised isolation and quarantine. The Community Health Bureau will continue to be diligent in our efforts to prevent avoidable disease through surveillance, services, and education.



# FAMILY AND SCHOOL HEALTH DIVISION HIGHLIGHTS:

The School Nursing Bureau had a challenging year with the changes in the schools caused by the COVID-19 pandemic. Despite the school closures for most of 2020, the school nurses did provide valuable services such as 2219 flu vaccines in 30 school-based clinics, 1627 Tier 1 and 414 Tier 2 vision screenings. During the school closures, the school nurses continued to work with the Tooele County School District on providing student health care plans, immunization assessments, etc., by using innovative tools. They were the liaison between the Tooele County Health Department and all county schools in providing education, training, and collaborating to address the pandemic in the school setting. The school nurses participated in the contact tracing and case investigations to help mitigate the spread of COVID-19 in our community and schools. The school nurses continue to evaluate their program and make changes, when needed, to safely provide nursing services to Tooele County families, students, staff, and faculties. These 5 school nurses provide vital health services in our schools and community.



# FAMILY AND SCHOOL

## HEALTH DIVISION

### HIGHLIGHTS:

Our WIC clinic went live with the national EWIC program, on November 1st. The update lends to a more convenient, discreet, and efficient process for the families in our community. EWIC has eliminated checks, opting for a card that looks and functions like a debit card. The card system addresses the issues families have historically had with using checks. For example, each check would count as a separate transaction. This made checking out at the grocery store very time consuming, since you couldn't ring up all the items at once. The EWIC card, allows for any eligible item to be covered, at the end of the transaction. Another major benefit, is that families can purchase what they need when they need it, rather than the check system where families had to buy every item on the check in one shopping trip. The card has made it much easier for everyone involved; from the participant, to the clinics, to the store. There haven't been many complaints. The families love it so much! Moms are even sending more dads to the store to shop!



# HEALTH PROMOTION

## BUREAU HIGHLIGHTS:

The Bureau of Health Promotion works closely with numerous partners to reduce the leading causes of illness and death. These efforts include promoting and advancing the prevention, early detection, and management of injuries and chronic diseases. This work takes place across many settings. Prevention and control efforts are closely coordinated because risk factors (e.g. poor nutrition, lack of physical activity, and tobacco use) and prevention strategies are similar for many chronic conditions. Health Promotion programs, with public and private sector partners, deliver effective health promotion and prevention services and education in communities, schools, worksites, and health care settings.

Health Promotion receives funding based on a predetermined formula. Management and accountability of the funds are captured in contracts. Contracts outline the conditions and terms, including services, for both parties. Health Promotion plays a vital role in making our communities healthy. What we do or don't do with the funds greatly impacts, not just the quality of services, but also the amount of funds awarded. Contracts are renewed annually and vary by date. Health Promotion contracts are in the following program areas: Arthritis, Healthy Living, Violence and Injury Prevention, and Tobacco Prevention and Control. In Health Promotion most of 2020 was spent providing COVID-19 response. Health Promotion oversaw the COVID-19 phoneline and answered all calls and questions from the community. When able Health Promotion carried out their contracts to the best of their ability.

# HEALTHY SMILES DENTAL

## CLINIC HIGHLIGHTS:

The Tooele County Healthy Smiles Dental Clinic was formed in response to the significant need for dental care by those who have little or no means of obtaining the dental care they need. During 2020, our Dental Clinic continued to provide multiple services to our local community including: Dentures and Partial Dentures, Examinations, Extractions, Fillings, Fluoride Treatments, and X-Rays. In 2020 there were 437 new patients served, 2,183 patient visits, and 178 dentures and partial dentures made. Along with dentures limited root canals and crowns are done as well.

All Medicaid plans are accepted and they are the only provider in the County that is a University of Utah network dental office. With the changes with Medicaid, all patients with disabilities and over 65 with Medicaid have full dental benefits. This is so exciting for these patients to be able to receive the dental care they need! We also take 3 Medicare plans to help those individuals who in the past have had limited options of local dentists that take their plans.

"I love seeing someone's life change, simply by changing their smile."  
- Healthy Smiles Dental Clinic Employee



# PREVENTION SERVICES

## BUREAU HIGHLIGHTS:

In July 2020, the Prevention Services program moved from Valley Behavioral Health to the Tooele County Health Department. The Prevention Services team utilizes universal strategies to address the shared risk and protective factors associated with substance misuse, suicide, sexual violence, and other problem behaviors. The following highlights reflect what the Prevention Services bureau accomplished after its successful mid-year transition to the Health Department.

The Grantsville Communities That Care coalition—one of the community coalitions facilitated by the Prevention Services team—hosted a Chalk Art Festival in July 2020. The goal was to share prevention messaging, raise awareness of the local coalition, and encourage family and community bonding, which are protective factors against substance misuse. 450 people participated in the event.

Over 1,300 community members from Wendover and Tooele City attended Family Dinner Night events in their respective communities in September 2020. The goal of these events was to educate parents about their role in preventing underage substance use and encourage family bonding. These events were made possible through the dedication and collaborative efforts of the Wendover Prevention Group coalition members and the Tooele Interagency Prevention Professionals (TIPP) coalition.

# PREVENTION SERVICES

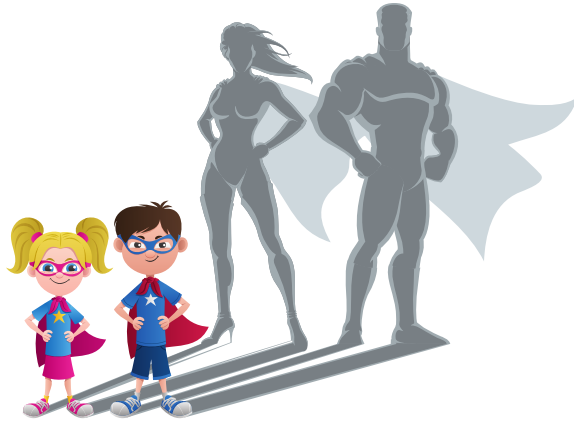
## BUREAU HIGHLIGHTS:

An Opioid Summit for first responders was held in Wendover, UT in September 2020. There were 26 attendees trained in primary prevention science and harm-reduction strategies.

Prevention Services acquired \$74,000 in grant funding to go toward e-cigarette, marijuana, opioid, and other drug prevention. Additionally, a grant funded by Temporary Assistance for Needy Families (TANF) amounting to \$50,000 was acquired to reduce the prevalence of sexual violence including child abuse and dating violence. The Tooele County School District elementary school counselors were subsequently trained in Prevent Child Abuse Utah's child abuse prevention curriculum. These counselors will be able to teach the curriculum to students in 15 elementary schools.

In collaboration with Tooele City Communities That Care, the evidence-based Question, Persuade, Refer (QPR) suicide prevention training was taught to 15 groups.

With the support of local law enforcement agencies, the Prevention team coordinated Eliminating Alcohol Sales to Youth (EASY) compliance checks at 16 alcohol retail locations to evaluate the skills and training of salesclerks in refusing to sell alcohol to minors.



**"The future is worth it.  
All the pain. All the tears.  
The future is worth the fight."  
–Martian Manhunter**

# COMMUNICABLE DISEASE DATA:

DISEASE	2019	*2020	COMPARISON
Botulism, infant	0	0	=
Brucellosis	0	0	=
Campylobacteriosis	22	4	▼
Chickenpox, (Varicella)	2	0	▼
Chlamydia trachomatis infection	203	171	▼
Coccidioidomycosis	2	2	=
Creutzfeldt-Jakob Disease (human spongiform)	0	0	=
Cryptosporidiosis	6	0	▼
Giardiasis	2	4	▲
Gonorrhea	57	50	▼
Haemophilus influenzae, invasive disease	1	0	▼
Hepatitis A	0	2	▲
Hepatitis B virus infection, chronic	1	3	▼
Hepatitis B, acute	0	0	=
Hepatitis C virus infection, chronic	40	44	▲
Hepatitis C, acute	3	1	▼
Influenza-associated hospitalizations	35	15	▼
Legionellosis	1	0	▼
Lyme disease	1	0	▼
Malaria	0	0	=
Meningitis, Viral	3	0	▼

\*2020 preliminary data

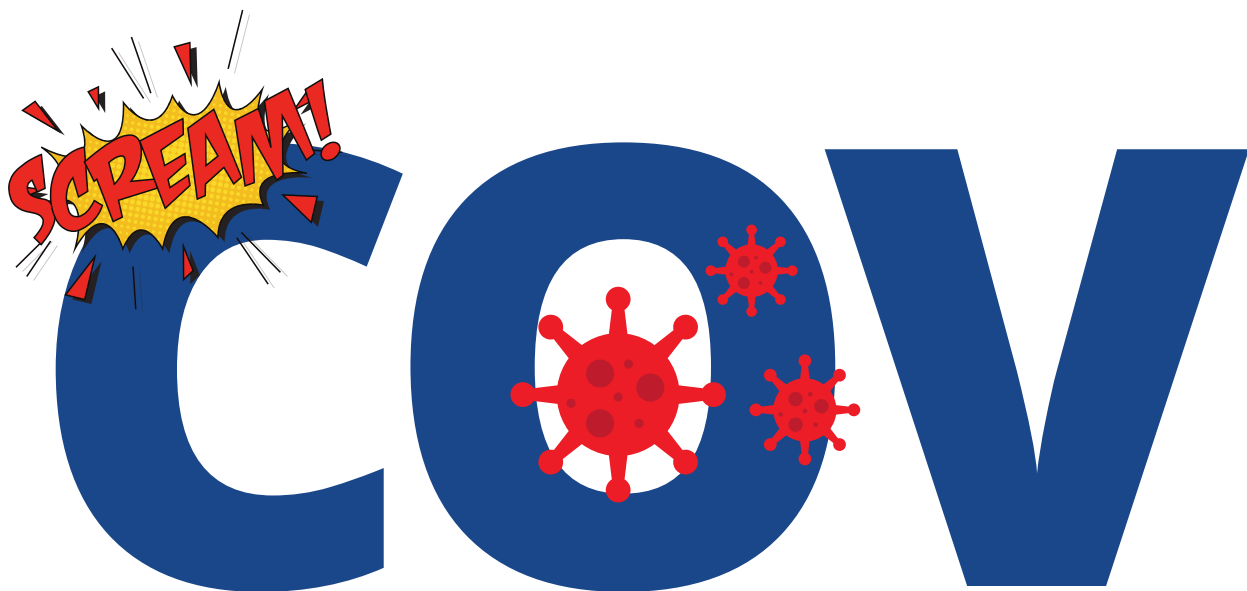


# COMMUNICABLE DISEASE DATA:

DISEASE	2019	*2020	COMPARISON
Mumps	0	0	=
Norovirus	7	1	▼
Pertussis	5	7	▲
Q fever, chronic	0	0	=
Salmonellosis	6	5	▼
Shiga toxin-producing Escherichia coli (STEC)	3	1	▼
Shigellosis	0	0	=
Streptococcal disease, invasive, Group A	8	1	▼
Streptococcal disease, invasive, Group B	1	5	▲
Streptococcal disease, invasive, other	1	1	=
Syphilis, early latent	0	0	=
Syphilis, rector	0	0	=
Syphilis, secondary	0	0	=
Tuberculosis Gateway	0	0	=
Tuberculosis, Active	0	1	▲
Tuberculosis, Latent Infection (LTBI)	0	0	=
Vibriosis (non-cholera Vibrio species infection)	0	0	=
West Nile virus neuroinvasive disease	0	0	=
West Nile virus non-neuroinvasive disease	0	0	=
Zika virus disease	0	0	=

\*2020 preliminary data





2020

**Total Positive Cases**  
**4095**



2020

**Total Hospitalizations**  
**102**



2020

**Total Deaths**  
**15**

# IB-19



2020

**Total Positive Cases Investigated**  
3726 (94%)



2020

**Total School Cases**  
139



2020

**Total Vaccines Given**  
951







**151 N Main St, Tooele, UT 84074**

**435-277-2300**

**[www.tooelehealth.org](http://www.tooelehealth.org)**



**@tooelehealth**