

# 2025 ANNUAL REPORT

---



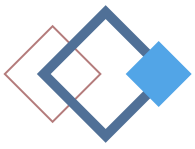
**TOOELE**  
C O U N T Y  
HEALTH DEPARTMENT



# Table of Contents

---

Director's Message	2
Mission, Vision, & Values	3
About the Annual Report	4
Board of Health	5
Financial Report	6
Community Health Overview	7
By the Numbers	8
Program Highlights	12
Data Dashboards	14
Leading Causes of Death	15
Community Snapshot Report	16



# Director's Message

**Dear Friends in Tooele County,**

As I reflect on 2025, I am struck by how often we found ourselves **doing hard things together**—as a team and community<sup>1</sup>. Public health includes complex challenges, yet this year showed how much stronger and creative we are when we move forward together—staff, partners, and residents aligned in purpose. The following framework guided us and centered on FOUR simple themes<sup>2</sup>:

**We Belong.**

Across our programs, we strengthened trust with one another and with the community members who rely on our services. Whether supporting families through WIC, helping seniors stay connected, ensuring safe environments, or providing essential clinical and emergency services, belonging meant creating spaces where people felt welcomed and valued. Our Board of Health contributed to this sense of connection by sharing perspectives from across the county and helping ensure the community shaped our work.

**We Learn.**

Learning was a shared effort. Through public health trainings, suicide prevention workshops, safety classes, and community education, we learned with residents. Board members also participated in trainings at the state and national level, bringing back insights that strengthened our local efforts.

**We Act.**

Throughout the year, we acted together with so many of you—installing car seats, responding to emergencies, providing dental care, supporting homebound seniors, and collaborating with partners on prevention initiatives.

**We Innovate.**

Innovation meant sharing ideas and finding practical ways to improve how we serve and deepen our compassion. Working with residents, organizations, and county partners, we strengthened and tried new approaches that helped us respond more effectively—reminding us that some of the best solutions arise from **doing hard things together**.

Each of these efforts brought us closer to our vision of **healthy and safe communities that allow all individuals to reach their full potential**.

And as we look ahead, we invite you to continue partnering with us—sharing your ideas, your questions, and your hopes—as we work together to build dignity and a thriving Tooele County for all.

Together in Wellness,

Grant Sunada, PhD, MPH  
Health Officer &  
Executive Director



**Footnotes**  
1. Inspired by the late Dr. Paul Farmer's phrase "doing hard things with friends," which reflected the ethos of his global health work and organization, Partners in Health.  
2. Adapted from: Timothy R. Clark, The 4 Stages of Psychological Safety (2020).

# Mission, Vision, & Values

## MISSION:

- To enhance the health and well-being of Tooele County.

## VISION:

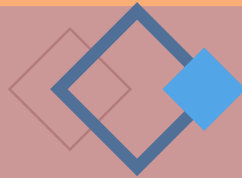
- Healthy and safe communities that allow all individuals to reach their full potential.

## VALUES:

- **Inclusive-** Treating all individuals with respect, dignity, acceptance, and compassion
- **Innovative-** Exploring creative ways to achieve goals and objectives
- **Preparedness-** Developing plans, building capacity, and securing resources for response and recovery
- **Equity-** Meeting the needs of all people and eliminating barriers to optimal health
- **Accountability-** Being good stewards of entrusted resources with transparency
- **Collaboration-** Building community-driven solutions
- **Excellence-** Using evidence-based practices and continuous quality improvement



# About the 2025 Annual Report



The 2025 Annual Report from the Tooele County Health Department provides an overview of the health of Tooele County residents. Public health data helps show how our community is doing, highlights key health concerns, and guides programs that support healthier lives.

By monitoring health trends and sharing reliable information, the Health Department works with community partners to address local challenges and support prevention efforts that improve the quality of life across Tooele County.

## Why Public Health Data Matters

Data helps public health professionals understand community needs and where support is most needed. It allows the Health Department to:

- Identify priority health concerns
- Track health trends over time
- Respond to public health emergencies
- Evaluate whether programs are meeting community needs
- Support evidence-based programs that prevent disease and improve health

Using reliable data helps ensure that public health resources are focused on where they can have the greatest impact.

## Prevent, Promote, and Protect

**Prevent:** Reducing risk for chronic illness, substance misuse, injury, and infectious disease.

**Promote:** Support community health and wellness to encourage health choices.

**Protect:** Preparing the community for emergencies. Ensuring water, soil, and air are clean. Enhance the safety of roadways, school zones, and trails.

## Common risk behaviors include:

- Tobacco use
- Poor nutrition
- Physical inactivity
- Excessive alcohol consumption

Public health programs help reduce these risks by promoting healthier habits and creating environments that support healthy choices.



# Board of Health

---

The Tooele County Board of Health was established February 9, 1982. Their terms are voluntary and they are not compensated. Terms are for 3 years. Members may serve 4 consecutive terms for a total of 12 years. Currently, Tooele County has 9 members who are appointed by governing officials and have jurisdiction in all unincorporated and incorporated areas of the county. An employee of the health department may not be a member.



Brittany Skinner



Erik Stromberg



Sheldon Birch



Dr. Michael Wells



Cheryl Damas



Matthew Jackson



Maresa Manzione



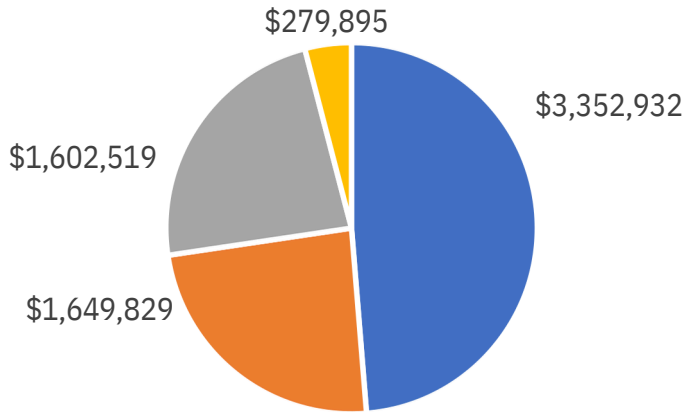
Anthony Howes



Radine Murphy

# FINANCIAL Report

## REVENUE

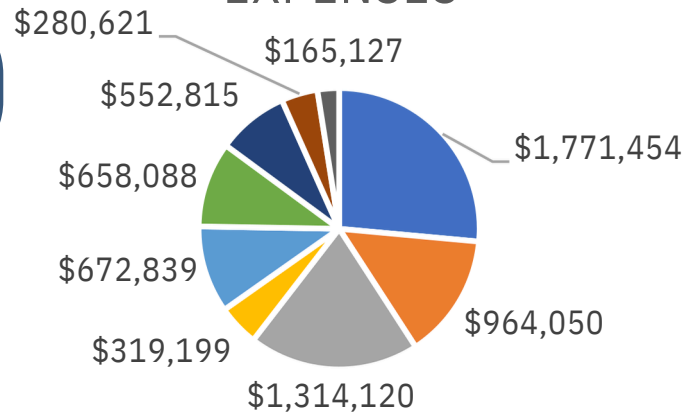


Total Revenue: \$6,885,175

- Contracts/Grants
- Local Funding
- Fees
- Other

## EXPENSES

Total Expenses: \$6,698,313



- Community Health
- Women Infants & Children
- Dental Health
- Emergency Preparedness
- Health Administration
- Environmental Health
- Health Promotion
- Building & County Administration

# Community Health Overview

Tooele County (2020 - 2022)

**38.5%**

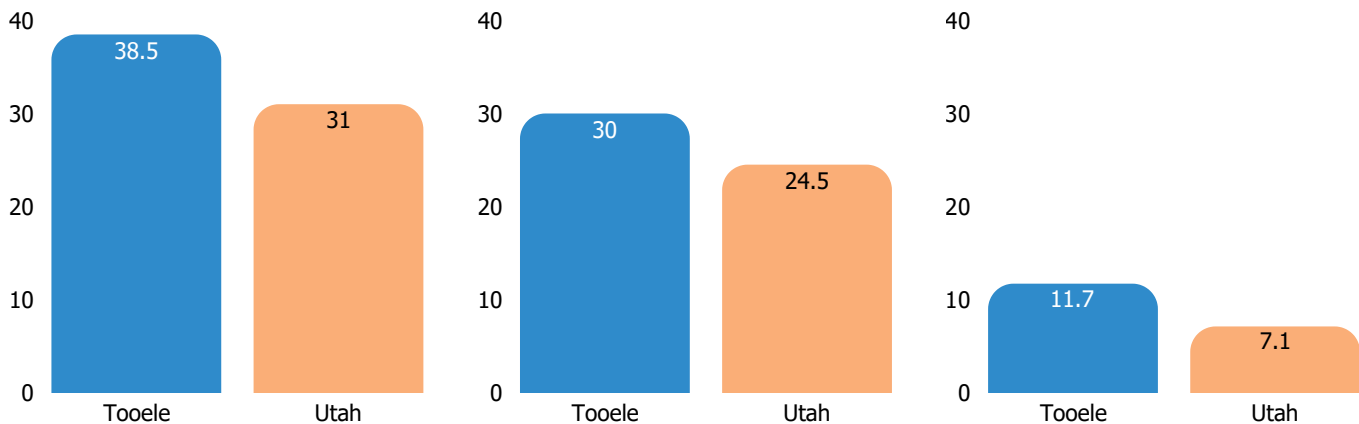
Adults with Obesity

**30.0%**

Mental Health: Depression

**11.7%**

Smoking Among Adults



**Public health data highlights key community health needs and helps guide programs that improve outcomes in Tooele County.**

- **Obesity**

- Consume fruits 2+ times per day
  - Tooele: 35%
  - Utah: 29%
- Consume vegetables 3+ times per day
  - Tooele: 14%
  - Utah: 13%

Source: Behavioral Risk Factor Surveillance System

For more detailed data, goals, and objectives, visit the Community Health Assessment and Community Health Improvement Plan on page 14.

# By the Numbers



## ENVIRONMENTAL HEALTH

2024

2025

	2024	2025
Food Truck Permits	26	39
Food Truck Inspections	41	43
Food Establishment Permits	243	270
Food Establishment Plan Reviews	24	26
Food Establishment Inspections*	60	432
Temporary Event Inspections	115	143
Food Handlers Permits Issued	2,529	2,860
Foodborne Illness Complaints	21	35
School and Playground Inspections	30	31
Daycare Food Service Inspections	15	50
Public Pool Water Inspections	48	35
Public Pool Water Samples	265	152
Body Art Establishment Plan Reviews	16	12
Body Art Establishment Inspections	39	30
Body Art Establishments Permitted	29	42
Meth Houses Decontaminated	15	16
Radon Kits Sold	62	80
Septic System Permits Issued	48	33
Well Permits Issued	17	12
Massage Inspections	5	6

\*2024 includes food establishment complaints only.  
2025 includes both inspections and complaints.

# By the Numbers

## VITAL RECORDS

	2024	2025
Birth Certificates	2,133	2,228
Death Certificates	605	667
Additional Copies of Birth	471	573
Additional Copies of Death	2,876	2,878
Multiple Pages	665	889
Stillbirth Certificates	2	3
Marriage/Divorce Certificates	44	62
Additional Marriage	5	16
Free Copies	141	109



## WOMEN, INFANTS & CHILDREN (WIC)

	2024	2025
Clients Served	1,552	1,535
Education Classes	53	72
Infants Breastfed at Birth	1,021	1,108

## AGING SERVICES

	2024	2025
Congregate Meals (meals served at Senior Centers)	24,195	22,832
Congregate Meal Participants	776	764
Home Delivered Meals	50,364	51,133
Meals on Wheels Clients	348	343
Senior Center Visits	31,203	33,242
Volunteers	70	69
Volunteer Hours	4,061	4,936



# By the Numbers

## PREVENTION SERVICES

	2024	2025
Prevention Event Attendees	5,811	4,507
Mental Health Trainings	77	98
Guiding Good Choices Completers	11 families	30
People trained in Mental Health Trainings	1,903	1,497
Alcohol Retailer Compliance Checks*	140	69
Illegal Alcohol Sales to Minors	2	0
Prime for Life Graduates	153	141
Gun Locks Distributed	200	100
Hope Boxes Distributed	117	100



Health Department staff & community partners at prevention coalition training

\*Compliance check numbers were lower in 2025 due to staff turnover during the year and reductions in federal grant funding.

"Great help on the phone. Great information. In office for vaccine easy, quick and courteous!"  
-Family and School Health client



## COMMUNITY NURSING

	2024	2025
Cancer Screenings	44	43
BeWise Consultations	23	29
Immunizations	11,192	9,960
Flu Clinics	50	48
Flu Vaccines Given	4,245	3,683
COVID Vaccinations Given	1,995	1,247
Initial Home Visits	57	178
Follow-up Home Visits	51	92
Sexually Transmitted Disease/HIV Testing and Treatment	85	79
Tuberculosis Testing	319	320

# By the Numbers

## EMERGENCY SERVICES

	2024	2025
Test Kits Distributed	10,928	2,400
Training Exercises	41	38

Kit distribution program ended in August

~ AWARDED ~  
**PROJECT PUBLIC HEALTH READY  
 RECOGNITION**  
 ~ 2024 TO 2028 ~

## HEALTHY SMILES DENTAL CLINIC

	2024	2025
New Patients	394	415
Encounters	2,015	2,038
Dentures & Partials	117	190
Crowns	94	108

"Best dental team ever. They make you feel like family, and they care about you!"  
 -Healthy Smiles dental client



## HEALTH PROMOTION 2024 2025

Car Seat Classes	12	12
Car Seats Checked	99	131
Car Seats Distributed	76	81
Healthy Aging Classes	18	21
Healthy Aging Class Participants	458	547
New TOP Star Endorsements	1	4
Naloxone Doses Distributed	418	642
Tobacco Handlers Trained/Permitted	29	37
Tobacco Compliance Checks	80	80
Illegal Tobacco Sales to Minors	0	0
Quit Line Registrations	94	99
Senior Farmers Market Participants	99	65



# Program Highlights

## Car Seat Safety

Using a car seat the right way can lower the risk of death by up to 71%, but more than half are installed incorrectly. Community members can set up an appointment with a trained Child Passenger Safety Technician to check for recalls and get help installing the seat safely in their vehicle. Through grant funding, car seats are available for families who qualify.

**Associated leading cause of death:** unintentional injuries



"Every parent needs to take this class no matter how experienced you are. Very informative. Enjoyed this class very much."  
-Car Seat class participant

"I learned a lot that I never knew. I now feel comfortable installing kids' carseats."  
-Car Seat class participant



"I feel like I learned a lot today, that helps me feel at ease about my children's safety. Thank you!"  
-Car Seat class participant

# Program Highlights

## Aging Services

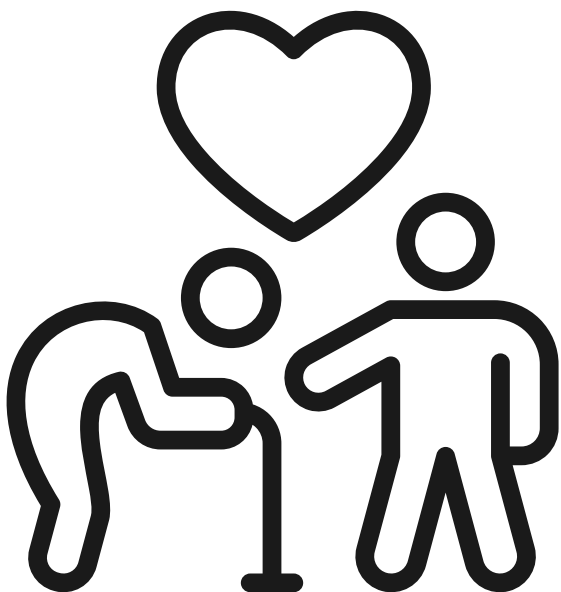
- Caregiver Support
- Evidence-Based Programs
- Grief Support
- In-Home Services
- Meals on Wheels
- Medicare/Medicaid Assistance
- Senior Center Activities and Meals
- Transportation
- Veteran Directed Care
- Volunteer Opportunities



"I love the resources and activities provided at the Senior Centers in Tooele County."  
-Senior Center participant



"Great medicare class. She had a wealth of knowledge and provided many answers and was patient with those who had repetitive questions. The class went long because she spent the time to provide those answers. She also stayed after answering questions and help show us how to navigate the website. Thank you!"  
-Aging Services client



# Data Dashboards

## Health Priority Areas:

- Promoting Healthy Living
- Improving Mental Health and Preventing Suicide
- Reducing Substance Abuse

Scan the QR Codes to access  
the Community Health Improvement Plan (CHIP)  
&  
Community Health Assessment (CHA) dashboards



Community Health  
Improvement Plan  
Dashboard



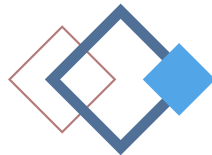
Community Health  
Assessment  
Dashboard

# Leading Causes of Death

Age-adjusted per 100,000 population

	2023	2024
1- Diseases of the heart	194.5	196.3
2- Malignant neoplasms (cancers)	156.2	115.1
3- Unintentional injuries	55.2	50.7
4- Chronic lower respiratory diseases	41.1	48.9
5- Diabetes Mellitus	37.4	31.2
6- Intentional self-harm (suicide)	24.2	26.3
7- Alzheimer's disease	45.9	25.4
8- Nutritional deficiencies	Not Ranked	24.1
9- Cerebrovascular diseases	25.8	22.3

Source: Utah Department of Health and Human Services. (n.d.). Utah Death Certificate Database [Data set]. Indicator-Based Information System for Public Health (IBIS-PH). Retrieved March 5, 2026, from <https://ibis.utah.gov/ibisph-view/query/result/mort/MortCntyICD10/AgeRate.html>

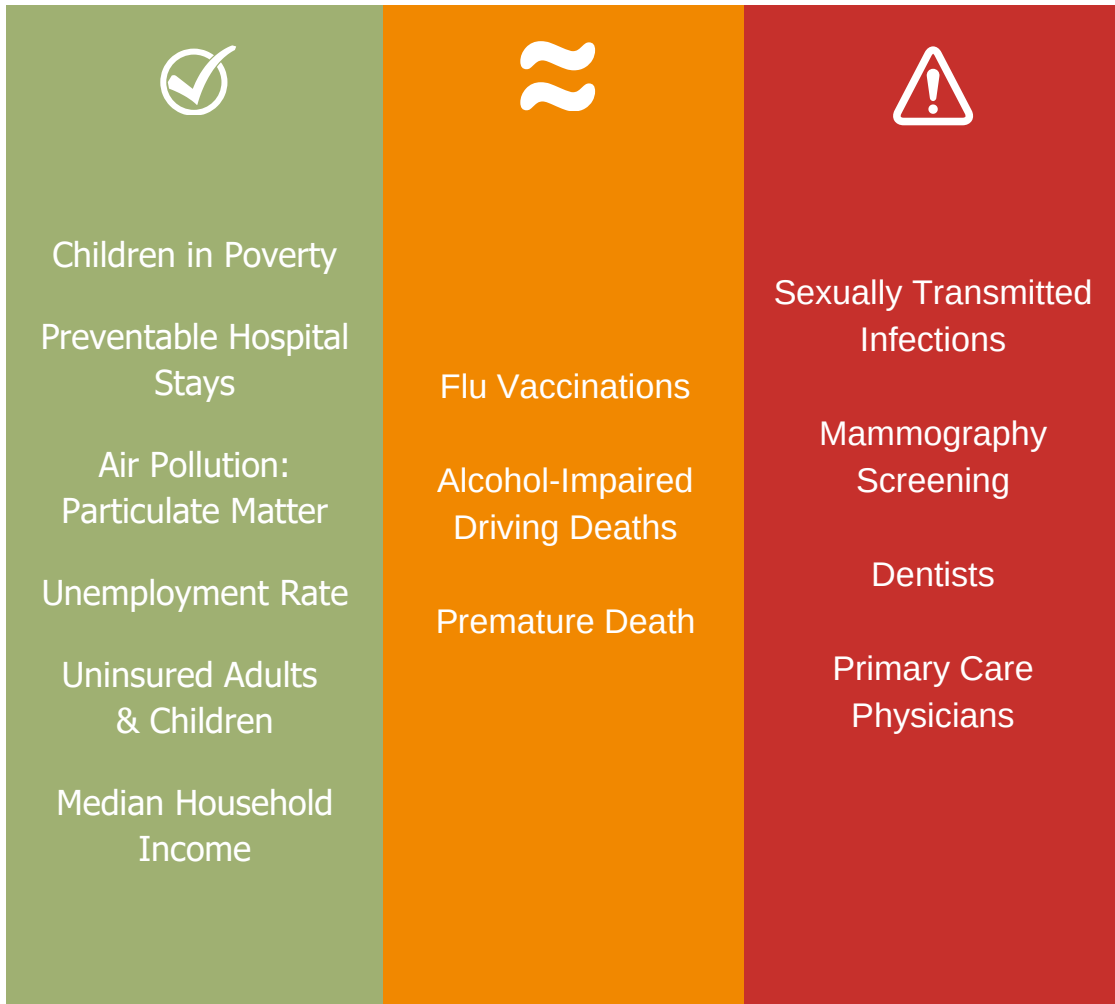


# Emergency Department Visits

	2024	2025
Influenza	289	385
COVID-19	249	125
Respiratory syncytial virus (RSV)	36	45

Source: National Syndromic Surveillance Program: Electronic Surveillance System for the Early Notification of Community-based Epidemics: Centers for Disease Control and Prevention. (n.d.). NSSP-ESSENCE [Software].

# Community Snapshot



## KEY TO SYMBOLS

- ✓ Our community is performing BETTER than the state.
- ≈ Our community is performing ABOUT THE SAME as the state.
- ⚠ Our community is performing WORSE than the state.

Source: University of Wisconsin Population Health Institute. (2025). 2025 health data: Tooele, Utah. County Health Rankings & Roadmaps. County Health Rankings: <https://www.countyhealthrankings.org/health-data/utah/tooele?year=2025>



# Contact Us

151 N Main St, Tooele, UT 84074

(O) 435-277-2300

(F) 435-277-2464

[www.health.tooeleco.gov](http://www.health.tooeleco.gov)

